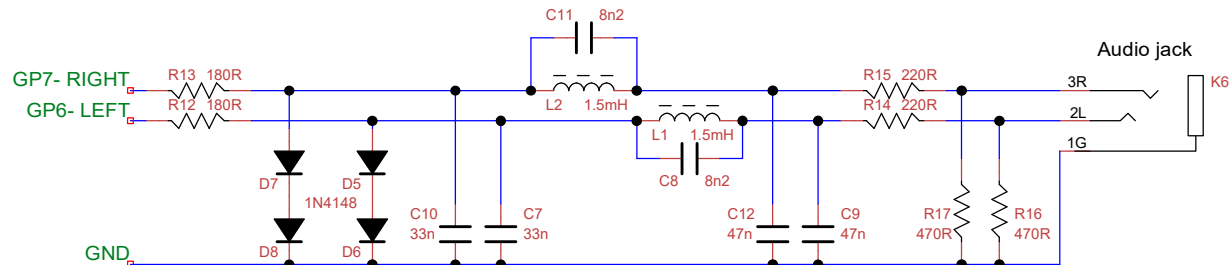
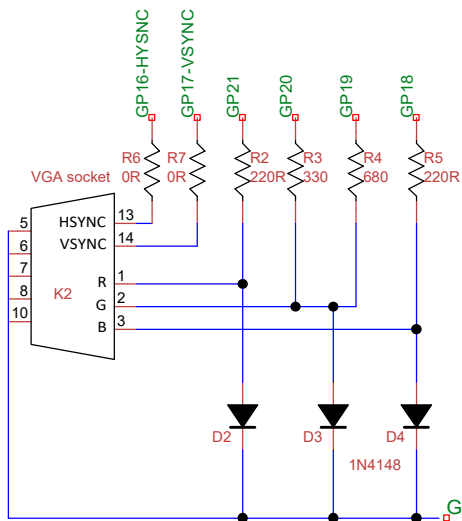
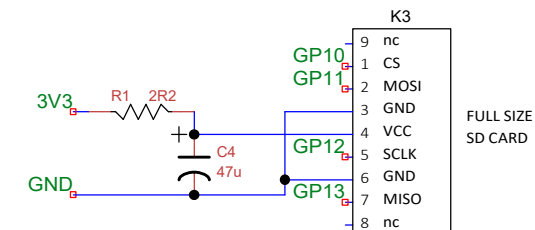
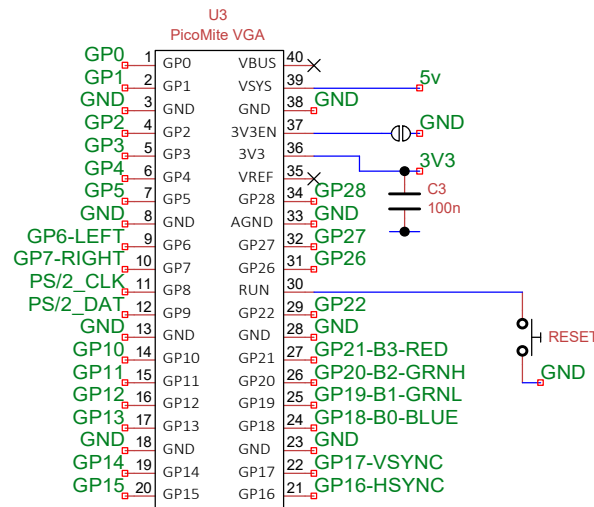


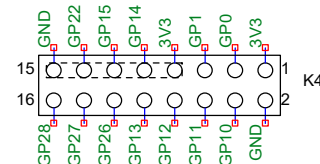
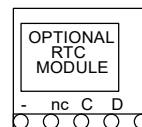
Note: 2N7000 can usually be used as a substitute but VGS(th) is a little high. Pinout is the same. BS170 is equivalent to 2N7000 and



Note: L1, L2, C8 and C11 should ideally be 5% tolerance for best results. The other components can



Assembly Note:  
Due to the restricted height available it's necessary to form the leads of U1, Q1 and Q2 prior to fitting. The aim is to get a maximum height of 8mm from the PCB for these. This is achievable with care. Do not simply force the device into the pcb as this can introduce microfractures into the leads and moulding which often cause problems at a later date.



Expansion port - rear view

Title		
PicoMite VGA Keyboard		
Author		
Mixel90		
File		
J:\User\Desk ... PicoMite VGA Keyboard 00.dsn		
Revision		
0		
Date		
03 May 22		
Sheets		
1 of 1		